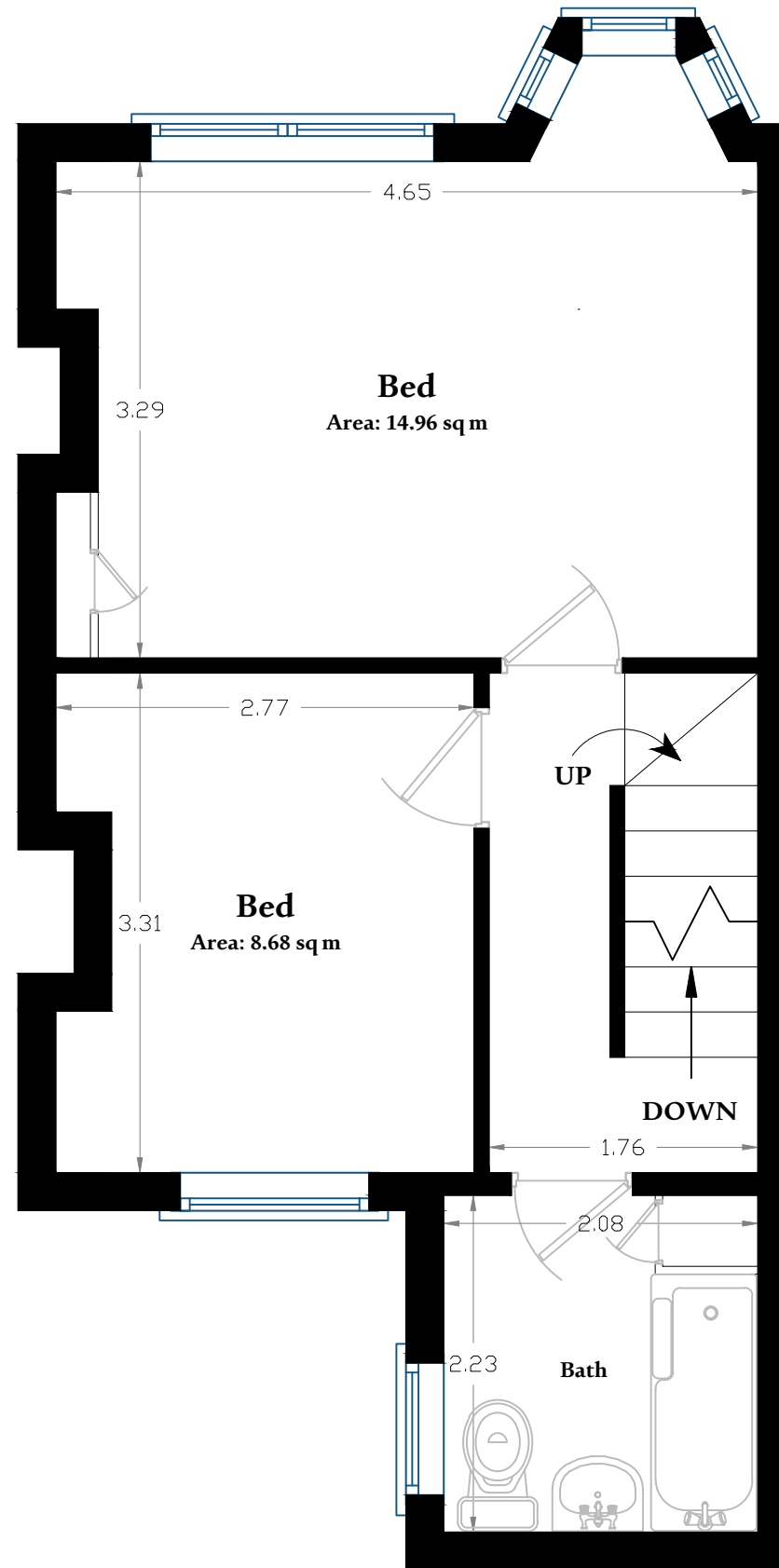
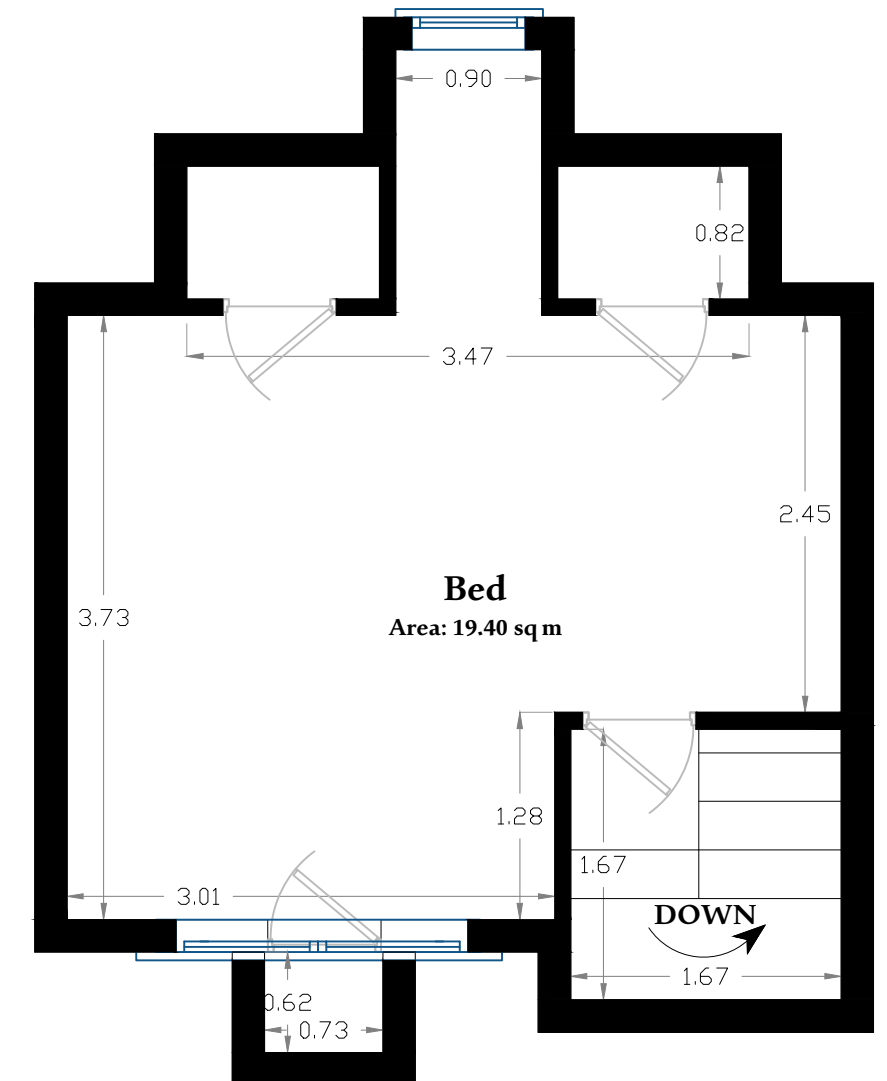


Ground Floor
Area 35.26 sq m



First Floor
Area 35.26 sq m

4 Greenwich Park St, London SE10 9AA
Total Area 93 sq m



Top Floor
Area 22.48 sq m

Whilst every attempt has been made to ensure the accuracy of the floor plan contained here, measurements of doors, windows and rooms are approximate and no responsibility is taken for any error. These plans are for representation purposes only and should be used as such by any prospective party. Specifically no guarantee is given on the total square footage of the property if quoted on this plan. Any figure given is for initial guidance only and should not be relied on as a basis of valuation.

Created by Mohammad Mahdi @2025
www.fast-epc.co.uk